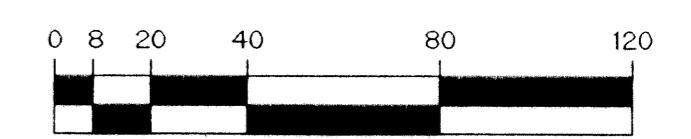
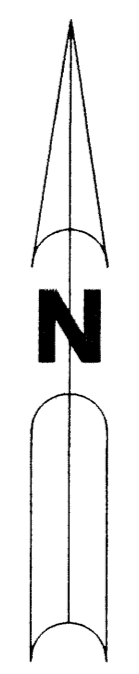


# SATURNIA ISLES - PLAT ONE

BEING A REPLAT OF TRACTS 113 THROUGH 120 AND A PORTION OF TRACTS 105 THROUGH 108, SECTION 19, TOWNSHIP 46 SOUTH, RANGE 42 EAST AND A PORTION OF TRACTS 10 THROUGH 16, SECTION 30, TOWNSHIP 46 SOUTH, RANGE 42 EAST, PALM BEACH FARMS COMPANY PLAT NO. 1 AS RECORDED IN PLAT BOOK 2, PAGES 26 THROUGH 28 TOGETHER WITH BLOCKS 2 THROUGH 5 AND A PORTION OF BLOCKS 1 AND 6, MILLER'S PARK UNIT 2 AS RECORDED IN PLAT BOOK 4, PAGE 75 TOGETHER WITH ROAD RIGHT-OF-WAY ABANDONED PER OFFICIAL RECORD BOOK 12389, PAGE 1259 ALL OF THE PUBLIC RECORDS OF PALM BEACH COUNTY, FLORIDA, LYING IN SECTIONS 19 AND 30, TOWNSHIP 46 SOUTH, RANGE 42 EAST.

SHEET 11 OF 11 DECEMBER, 2000

THIS INSTRUMENT PREPARED BY  
 PERRY C. WHITE, P.S.M. 4213, STATE OF FLORIDA  
 LAWSON, NOBLE AND WEBB, INC.  
 ENGINEERS PLANNERS SURVEYORS  
 420 COLUMBIA DRIVE  
 WEST PALM BEACH, FLORIDA 33409  
 LB-6674

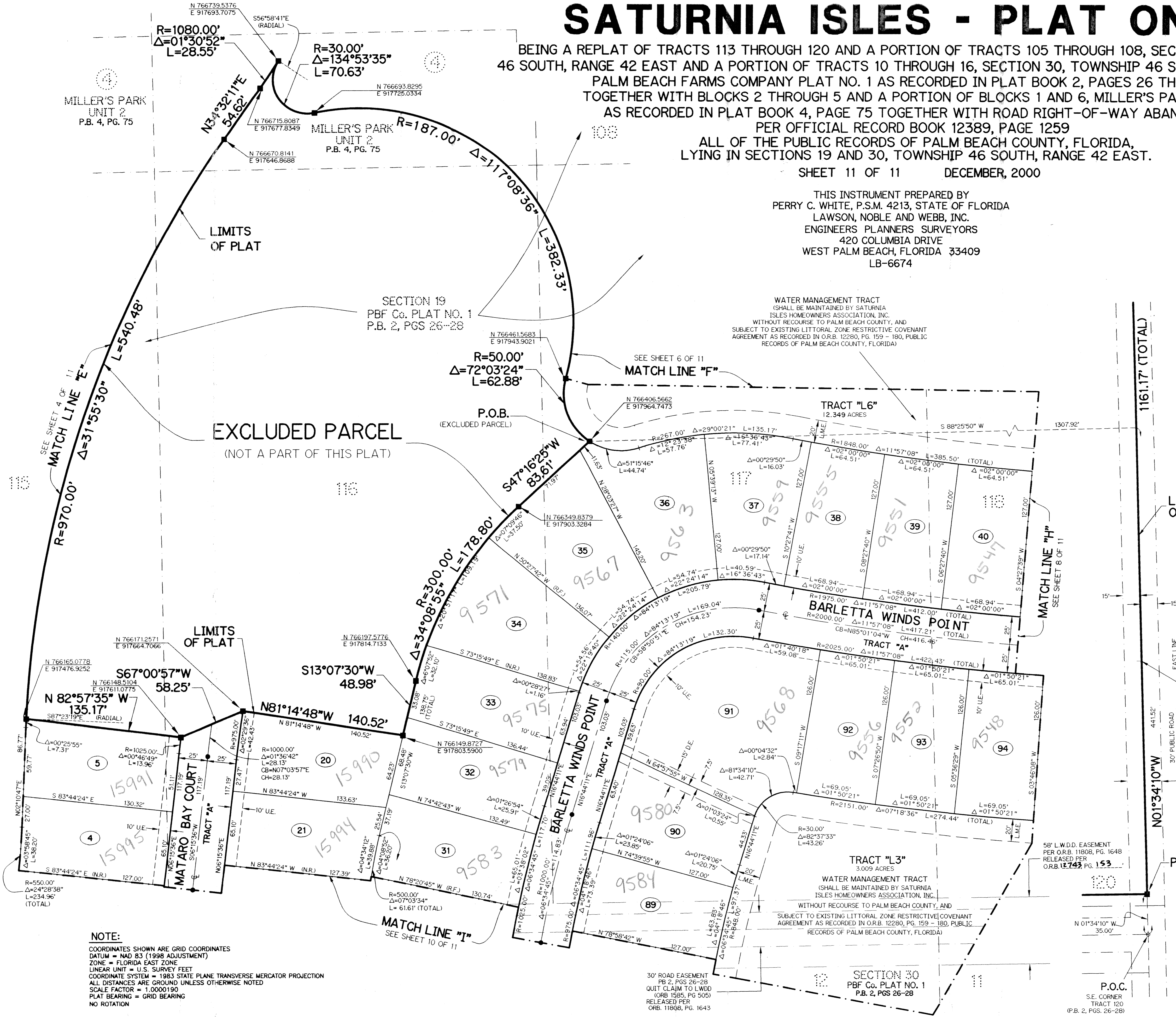
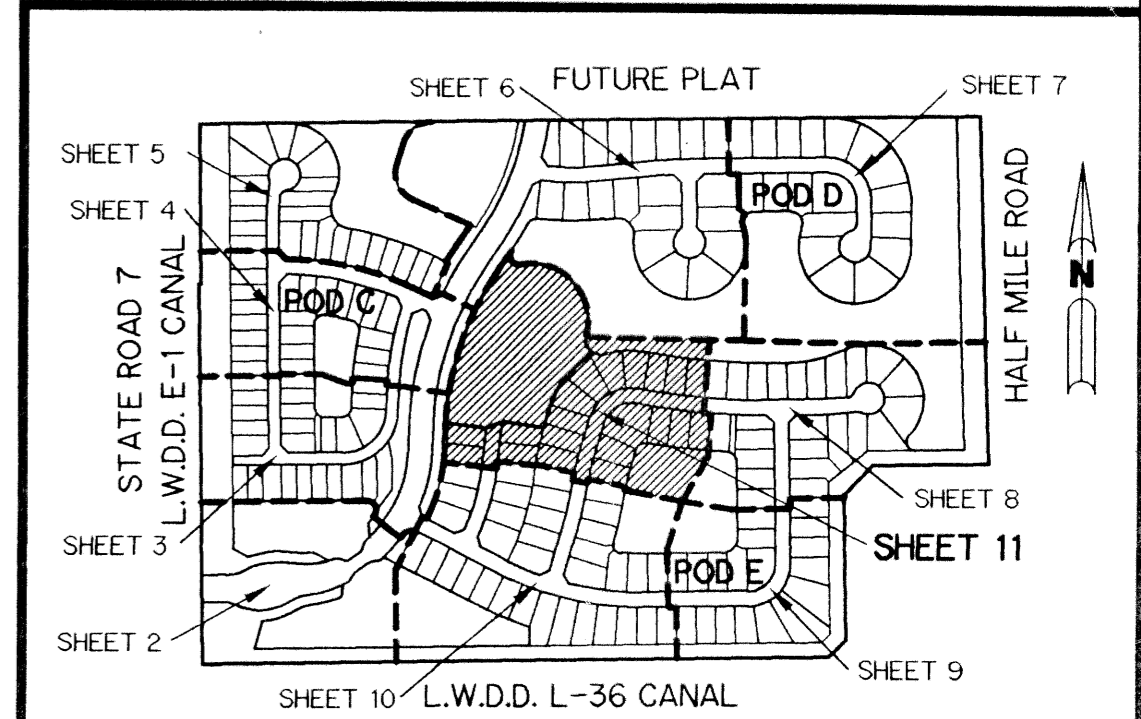


SCALE: 1" = 40'

### LEGEND:

- - SET PERMANENT REFERENCE MONUMENT, L.B. #6674
- - FOUND PERMANENT REFERENCE MONUMENT, L.B. #6674
- - SET PERMANENT CONTROL POINT, L.B. #6674
- - FOUND PERMANENT CONTROL POINT, L.B. #6674
- Δ - DELTA ANGLE
- ABAND. - ABANDONED
- B.E. - BUFFER EASEMENT
- CB - CHORD BEARING
- CH - CHORD DISTANCE
- C - CENTERLINE
- D.B. - DEED BOOK
- D.E. - DRAINAGE EASEMENT
- L - ARC LENGTH
- L.A.E. - LIMITED ACCESS EASEMENT
- L.M.A.E. - LAKE MAINTENANCE EASEMENT
- L.M.E. - LAKE MAINTENANCE EASEMENT
- L.W.D.D. - LAKE WORTH DRAINAGE DISTRICT
- NR. - NOT RADIAL
- N.T.S. - NOT TO SCALE
- O.E. - OVERHANG EASEMENT
- O.R.B. - OFFICIAL RECORD BOOK
- P.B. - PLAT BOOK
- P.G.S. - PAGES
- P.C. - POINT OF COMPOUND CURVATURE
- P.C. - POINT OF CURVATURE
- P.I. - POINT OF INTERSECTION
- P.T. - POINT OF TANGENCY
- P.S.M. - PROFESSIONAL SURVEYOR AND MAPPER
- R - RADIUS
- RAD. - RADIAL
- R/W - RIGHT-OF-WAY
- S.D.E. - SWALE DRAINAGE EASEMENT
- S.T. - SURVEY TIE
- (TYP.) - TYPICAL
- U.E. - UTILITY EASEMENT
- P.B.F.C. - PALM BEACH FARMS COMPANY PLAT NO. 1 (P.B. 2, PGS. 26-28)
- N 737648.0171 E 905258.2326 - DENOTES STATE PLANE COORDINATES
- 117 - DENOTES TRACT NUMBER PER PALM BEACH FARMS COMPANY PLAT NO. 1 (P.B. 2, PGS. 26-28)
- 118 - DENOTES BLOCK NUMBER PER MILLER'S PARK UNIT 2 (P.B. 4, PG. 75)

### KEY MAP



**NOTE:**  
 COORDINATES SHOWN ARE GRID COORDINATES  
 DATUM = NAD 83 (1986 ADJUSTMENT)  
 ZONE = FLORIDA EAST ZONE  
 LINEAR UNIT = U.S. SURVEY FEET  
 COORDINATE SYSTEM = 1983 STATE PLANE TRANSVERSE MERCATOR PROJECTION  
 ALL DISTANCES ARE GROUND UNLESS OTHERWISE NOTED  
 SCALE FACTOR = 1.0000190  
 PLAT BEARING = GRID BEARING  
 NO ROTATION

30' ROAD EASEMENT  
 PB 2, PGS 26-28  
 QUIT CLAIM TO LWDD  
 (ORB 1585, PG 505)  
 RELEASED PER  
 ORB. 11806, PG. 1643

P.O.C.  
 S.E. CORNER  
 TRACT 120  
 (P.B. 2, PGS. 26-28)

Saturnia Isles - Plat One  
 118  
 117  
 116  
 115  
 114  
 113  
 112  
 111  
 110  
 109  
 108  
 107  
 106  
 105  
 104  
 103  
 102  
 101  
 100  
 99  
 98  
 97  
 96  
 95  
 94  
 93  
 92  
 91  
 90  
 89  
 88  
 87  
 86  
 85  
 84  
 83  
 82  
 81  
 80  
 79  
 78  
 77  
 76  
 75  
 74  
 73  
 72  
 71  
 70  
 69  
 68  
 67  
 66  
 65  
 64  
 63  
 62  
 61  
 60  
 59  
 58  
 57  
 56  
 55  
 54  
 53  
 52  
 51  
 50  
 49  
 48  
 47  
 46  
 45  
 44  
 43  
 42  
 41  
 40  
 39  
 38  
 37  
 36  
 35  
 34  
 33  
 32  
 31  
 30  
 29  
 28  
 27  
 26  
 25  
 24  
 23  
 22  
 21  
 20  
 19  
 18  
 17  
 16  
 15  
 14  
 13  
 12  
 11  
 10  
 9  
 8  
 7  
 6  
 5  
 4  
 3  
 2  
 1